

IALEP 2009 ANNUAL CONFERENCE ST. LOUIS, MISSOURI
September 13 through 18, 2009



TENTATIVE TRAINING SESSIONS

1. Use of Force
Discussion of issues surrounding use of force and policies pertaining to the use of force. Issues covered will include the training of officers, record keeping, liabilities and technical issues.
2. Police Recruitment and Retention
Innovative ideas and plans for implementation to deal with the issues surrounding recruitment and retention of officers. Best practices experiences of other agencies to be discussed.
3. Reintegration After Military Service
Many departments are beginning to identify the need to take a proactive role in assisting officers returning from active duty. Discussion will include the use of pre and post deployment support groups and transitional training covering rules of engagement, driving tactics, use of force implementation and psychological concerns.
4. Anticipating Growth and Allocation
Presentation on dealing with population growth and change and the resource allocation challenges which accompany it.
5. Misuse / Misinterpretation of Crime Data
Examine the ways in which statistics can be used improperly and ways to combat these issues when dealing with the media and other organizations. Will touch on reactive and proactive measures.
6. Unit Activity Graph

- Discussion of an innovative activity graph that can be utilized as a planning tool. This graph tracks the activity of patrol units during shifts to show productivity and effectiveness of resource allocation.
7. Police Foundation Panel
Members from various national police foundations will participate in a panel discussion regarding the purpose, use and relationships between the foundations and corresponding Departments.
 8. Greening Panel
This collaboration of IALEP members will discuss ways in which Departments are addressing the problems that accompany increased energy and fuel costs.
 9. Law Enforcement Organization of Planning and Research Directors (LEOPRD)
This forum will serve as an introduction and explanation of LEOPRD. Topics covered may include issues, methodologies and best practices of Planning and Research Units and the process of identifying model Planning and Research Units in a proactive versus reactive role within Departments.
 10. Predictive Analytics Using SPSS
Presentation of the latest trends and best practices in statistics, data mining, predictive analytics, and business intelligence technology using the data analysis software SPSS.
 11. Evaluation Research
Discussion of evaluation research as it seeks to provide objective assessments of past, present, or proposed programs of action. By utilizing this type of research, planners can provide a methodical assessment of the operations or outcomes of programs/policies.
 12. Varieties and Effectiveness of Hot Spot Policing
Report on results from a National Survey of Police Agencies and a re-assessment of prior research on hot spot policing. Examination of strategies used by Departments to address identified hot spots and those that appear to be the most successful.
 13. Compstat and Community Policing: Recommendations for Integration
Presentation of findings from the first national research project examining the relationship between Compstat and community policing. Data included in this study include focus group findings from seven U.S. police departments and feedback from practitioners and policy makers. Report on envisioning an integrated Compstat and community policing program that promises greater multiplicative effects.
 14. The Latest from NIJ

A presentation by NIJ regarding the latest events, technology and trends at NIJ.

15. Effects of Problem Oriented Policing on Crime and Disorder

Report on a systematic review of the effectiveness of problem-oriented policing (POP) in reducing crime and disorder.

16. Re-conceptualizing Public Area Surveillance and Social Control

Report on public area surveillance measures effect on crime in public places. Types of surveillance examined include CCTV, improved street lighting, and the use of security guards, place managers and defensible space.

CONFERENCE HOTEL
ST. LOUIS HILTON AT THE BALLPARK



**Hilton St. Louis at the
Ballpark**

1 South Broadway, Saint Louis, Missouri,
United States 63102
Tel: 1-314-421-1776
Fax: 1-314-331 9029



BARRY'S ROOM

EVENTS

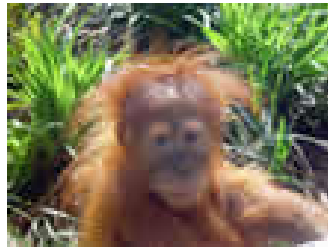
Take a Monday night excursion on the Mississippi River:



View the St. Louis skyline while you listen to Ragtime Jazz and mingle with your fellow Planners on our own private chartered riverboat.

Start off Wednesday afternoon with a tour of the historic Anheuser-Busch Brewery in St. Louis. After an informative guided tour of the brewery, we'll head to the nationally ranked St. Louis Zoo.

St. Louis Zoo



Stroll through the 77 acres of the beautiful St. Louis Zoo for the rest of the afternoon.



At the end of the day, we'll enjoy a catered meal on the grounds of the zoo and then return to the hotel.

IALEP ANNUAL TRAINING CONFERENCE
September 13 through 18, 2009 - St. Louis Hilton at the Ballpark
 Your host is the...**St. Louis Metropolitan Police Department**

REGISTRATION FORM

Please Print Clearly. One Registrant per form (copy as needed)

Attendee Name:		
Organization Name:		
Mailing Address:		
Phone:	FAX:	Email:
New IALEP Member Yes No	First IALEP Conference Yes No	
Attendee's Name for Badge (please print clearly):		
Adult Guest Name for Badge (if attending activities):		
Children Names for Badge (if attending activities):		
ROUNDTABLE SESSION:		
List any new program(s)/project(s) in your agency.		
Would you like to have 5-10 minutes to present? Y N		
Would you like to provide an abstract? Y N		
List any topic(s)/problem(s) for discussion. Would you like to facilitate the discussion? Y N		

PAYMENT: Checks shall be made payable to "IALEP 2009 Conference". We are unable to accept credit card payments. Do not include hotel fees; make all room reservations and payments directly with the Ballpark Hilton Hotel, (314) 421-1776. The IALEP Taxpayer Identification Number (TIN) is 43-1569519 (IALEP is a nonprofit organization).

REGISTRATION: Mail a separate registration form for each attendee. If you are unable to submit a check with the registration form, send the check at a later time. For planning purposes, please send your registration as soon as possible. The check does not have to accompany the registration form. Registration forms and checks should be sent to: International Association of Law Enforcement Planners, P.O. Box 11437, Torrance, CA 90510-1437.

Please register by August 31, 2009, or call/email to make special arrangements (see contact information below).
Full Registration (includes speakers, meetings, handouts, exhibits, daily refreshments, member lunch, Wednesday outing, Thursday banquet, and other features)

Current Members.....\$475 by 08/31/09...\$525 after 08/31/09.. \$ _____
Non-members (includes required member dues)..\$550 by 08/31/09...\$600 after 08/31/09.. \$ _____
Single Day Rate (For attendees not attending entire conference, does not include Thursday banquet)
 (Please check days attending) **Mon** ...**Tues** ...**Wed** ...**Thurs** . Each day x **\$125** \$ _____
Guest Fee(s) (includes Tues. lunch, Thurs. banquet, Wed. outing)..... Each guest x **\$250**.. \$ _____
Children (6-12 yrs.)Each child x **\$125**... \$ _____
TOTAL PAYMENT (U.S.C only)....\$ _____

The conference is not restricted to current members and IALEP welcomes all interested parties. It is the policy of the IALEP and the Hilton at the Ballpark to fully comply with the requirements of the Americans with Disabilities Act. If you need special accommodations to participate in this event, please provide thirty (30) days notice of special needs. Substitute attendees accepted (please notify). Registration fees will be refunded in full for cancellations received by August 31, 2009. Membership dues are nonrefundable. Written notification/requests for refunds must follow calls or emails. All speakers, topics, and activities are subject to change without notice and are not guaranteed.

CONTACT INFORMATION: Additional conference information is available on the IALEP website www.ialep.org and from Kenneth Hailey, St. Louis Police Department, Phone (314) 444-5531, FAX (314) 444-5514, Email khailey@slmpd.org. Office hours are Mon – Fri. 0800 to 1700.